

# SECTION 21, T.6N., R.2E., S.L.B. & M.

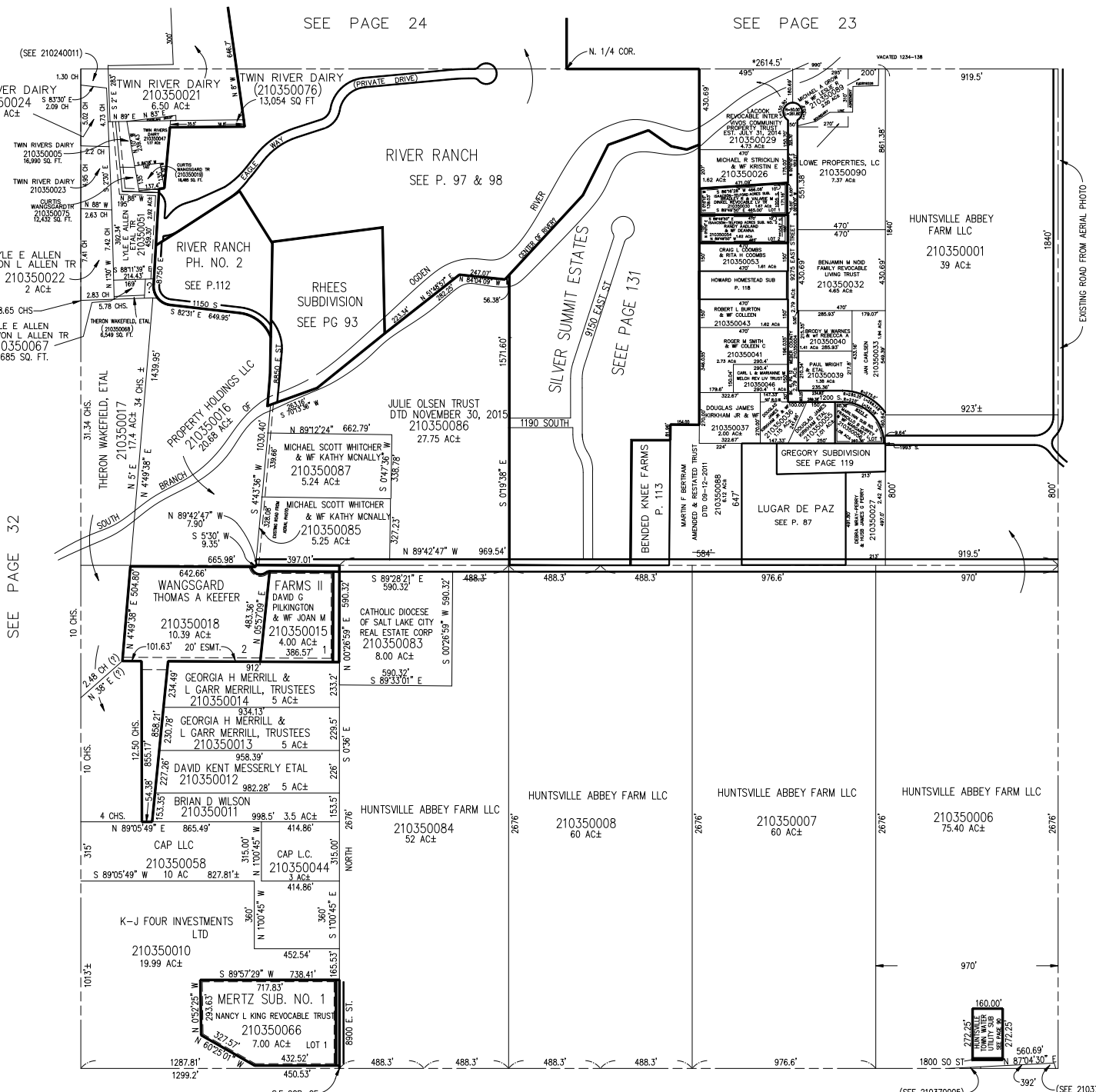
IN WEBER COUNTY

SCALE 1" = 400'

TAXING UNIT: 520

SEE PAGE 24

SEE PAGE 23



SEE PAGE 32

SEE PAGE 33

SEE PAGE 36

SEE PAGE 37

\* NOTE: DATA ON THE NORTH SECTION LINE BASED ON ORIGINAL PLAT IN BOOK 6, PAGE 64.

\*\*SEE AFFT E#1422589 BK 1819 PG 2772